



# HERPES SIMPLEX VIRUS 1 IgG ELISA

*KAPDHSV1G*





# HERPES SIMPLEX VIRUS 1 IgG ELISA

en

KAPDHSV1G  
IN VITRO DIAGNOSTIC USE

DIAsource ImmunoAssays SA - Rue du Bosquet 2, B-1348 Louvain-la-Neuve, Belgium - Tel: +32 10 84 99 11 - Fax : +32 10 84 99 90

## 1. INTENDED USE

Enzyme ImmunoAssay (ELISA) for the quantitative/qualitative determination of IgG antibodies to Herpes Simplex Virus type 1 in human plasma and sera.

For "in vitro" diagnostic use only.

## 2. INTRODUCTION

Herpes Simplex Virus type 1 (HSV1) and type 2 (HSV2) are large complex DNA-containing viruses which have been shown to induce the synthesis of several proteins during infection, possessing an high number of crossreactive determinants and just a few of type-specific sequences.

The majority of primary and recurrent genital herpetic infections are caused by HSV2; while non genital infections, such as common cold sores, are caused primarily by HSV1.

The detection of virus specific IgG and IgM antibodies are important in the diagnosis of acute/primary virus infections or reactivations of a latent one, in the absence of evident clinical symptoms.

Asymptomatic infections may happen for HSV in apparently healthy individuals and during pregnancy. Severe herpetic infections may happen in immunocompromised and suppressed patients in which the disease may evolve toward critical pathologies.

The determination of HSV specific antibodies has then become important in the monitoring of "risk" patients and in the follow up of acute and severe infections.

## 3. PRINCIPLE OF THE TEST

Microplates are coated with native inactivated HSV1.

The solid phase is first treated with the diluted sample and IgG to HSV are captured, if present, by the antigens.

After washing out all the other components of the sample, in the 2<sup>nd</sup> incubation bound anti HSV1 IgG are detected by the addition of polyclonal specific anti hIgG antibodies, labelled with peroxidase (HRP).

The enzyme captured on the solid phase, acting on the substrate/chromogen mixture, generates an optical signal that is proportional to the amount of anti HSV1 IgG antibodies present in the sample. A Calibration Curve, calibrated against an internal Gold Standard, makes possible a quantitative determination of the IgG antibody in the patient.

## 4. COMPONENTS

Each kit contains sufficient reagents to perform 96 tests.



### Microplate

12 strips x 8 microwells coated with native UV inactivated HSV1 in presence of bovine proteins.

Plates are sealed into a bag with desiccant. Allow the microplate to reach room temperature before opening; reseal unused strips in the bag with desiccant and store at 2..8°C.

CAL	N
-----	---

### Calibrators

Ready to use and color coded standard curve derived from human plasma positive for HSV1 IgG ranging:

4ml CAL1 = 0 arbU/ml

4ml CAL2 = 5 arbU/ml

2ml CAL3 = 10 arbU/ml

2ml CAL4 = 20 arbU/ml

2ml CAL5 = 50 arbU/ml

4ml CAL6 = 100 arbU/ml.

Standards are calibrated in arbitrary units against an internal Gold Standard (or IGS).

It contains human serum proteins, 2% casein, 10 mM Na-citrate buffer pH 6.0 +/-0.1, 0.1% Tween 20, 0.09% Na-azide and 0.1% Kathon GC as preservatives. Standards are blue colored.



### Control Serum

1 vial. Lyophilized. It contains fetal bovine serum proteins, human IgG antibodies to HSV1 at about 20 arbU/ml +/-20%, 0.2 mg/ml gentamicine sulphate and 0.1% Kathon GC as preservatives.

**Note: The volume necessary to dissolve the content of the vial may vary from lot to lot. Please use the right volume reported on the label.**

WASH	SOLN	CONC
------	------	------

### Wash buffer concentrate

1x60ml/bottle 20x concentrated solution. Once diluted, the wash solution contains 10 mM phosphate buffer pH 7.0 +/-0.2, 0.05% Tween 20 and 0.1% Kathon GC.

Ab	HRP
----	-----

### Enzyme Conjugate

2x8ml/vial. Ready to use and red colour coded. It contains Horseradish peroxidase conjugated polyclonal antibodies to human IgG, 5% BSA, 10 mM Tris buffer pH 6.8 +/-0.1, 0.1% Kathon GC, 0.02% gentamicine sulphate as preservatives and 0.01% red alimentary dye.

CHROM	TMB
-------	-----

#### Chromogen/Substrate

1x16ml/vial. It contains 50 mM citrate-phosphate buffer pH 3.5-3.8, 4% dimethylsulphoxide, 0.03% tetra-methylbenzidine (or TMB) and 0.02% hydrogen peroxide (or H<sub>2</sub>O<sub>2</sub>).

**Note: To be stored protected from light as sensitive to strong illumination.**

STOP	SOLN
------	------

#### Sulphuric Acid

1x15ml/vial. It contains 0.3 M H<sub>2</sub>SO<sub>4</sub> solution.

Attention !: Irritant (Xi R36/38; S2/26/30)

DIL	SPE
-----	-----

#### Specimen Diluent

2x60ml/vial. It contains 2% casein, 10 mM Na-citrate buffer pH 6.0 +/-0.1, 0.1% Tween 20, 0.09% Na-azide 0.1% and Kathon GC as preservatives. The reagent is blue colour coded.

### 2 Plate sealing foils

### 1 Package insert

#### 5. MATERIALS REQUIRED BUT NOT PROVIDED

1. Calibrated Micropipettes (1000 µl, 100 µl and 10 µl) and disposable plastic tips.
2. EIA grade water (double distilled or deionised, charcoal treated to remove oxidizing chemicals used as disinfectants).
3. Timer with 60 minutes range or higher.
4. Absorbent paper tissues.
5. Calibrated ELISA microplate thermostatic incubator (dry or wet), set at +37°C (+/-0.5°C tolerance).
6. Calibrated ELISA microwell reader with 450nm (reading) and with 620-630nm (blanking) filters.
7. Calibrated ELISA microplate washer.
8. Vortex or similar mixing tools.

#### 6. WARNINGS AND PRECAUTIONS

1. The kit has to be used by skilled and properly trained technical personnel only, under the supervision of a medical doctor responsible of the laboratory.
2. All the personnel involved in performing the assay have to wear protective laboratory clothes, talc-free gloves and glasses. The use of any sharp (needles) or cutting (blades) devices should be avoided. All the personnel involved should be trained in biosafety procedures, as recommended by the Center for Disease Control, Atlanta, U.S. and reported in the National Institute of Health's publication: "Biosafety in Microbiological and Biomedical Laboratories", ed. 1984.
3. All the personnel involved in sample handling should be vaccinated for HBV and HAV, for which vaccines are available, safe and effective.
4. The laboratory environment should be controlled so as to avoid contaminants such as dust or air-borne microbial agents, when opening kit vials and microplates and when performing the test. Protect the Chromogen (TMB) from strong light and avoid vibration of the bench surface where the test is undertaken.
5. Upon receipt, store the kit at 2..8°C into a temperature controlled refrigerator or cold room.
6. Do not interchange components between different lots of the kits. It is recommended that components between two kits of the same lot should not be interchanged.
7. Check that the reagents are clear and do not contain visible heavy particles or aggregates. If not, advise the laboratory supervisor to initiate the necessary procedures for kit replacement.
8. Avoid cross-contamination between serum/plasma samples by using disposable tips and changing them after each sample.
9. Avoid cross-contamination between kit reagents by using disposable tips and changing them between the use of each one.
10. Do not use the kit after the expiration date stated on the external container and internal (vials) labels. A study conducted on an opened kit did not pointed out any relevant loss of activity up to six 6 uses of the device and up to 3 months.
11. Treat all specimens as potentially infective. All human serum specimens should be handled at Biosafety Level 2, as recommended by the Center for Disease Control, Atlanta, U.S. in compliance with what reported in the Institutes of Health's publication: "Biosafety in Microbiological and Biomedical Laboratories", ed. 1984.
12. The use of disposable plastic-ware is recommended in the preparation of the liquid components or in transferring components into automated workstations, in order to avoid cross contamination.
13. Waste produced during the use of the kit has to be discarded in compliance with national directives and laws concerning laboratory waste of chemical and biological substances. In particular, liquid waste generated from the washing procedure, from residuals of controls and from samples has to be treated as potentially infective material and inactivated before waste. Suggested procedures of inactivation are treatment with a 10% final concentration of household bleach for 16-18 hrs or heat inactivation by autoclave at 121°C for 20 min..
14. Accidental spills from samples and operations have to be adsorbed with paper tissues soaked with household bleach and then with water. Tissues should then be discarded in proper containers designated for laboratory/hospital waste.
15. The Sulphuric Acid is an irritant. In case of spills, wash the surface with plenty of water.
16. Other waste materials generated from the use of the kit (example: tips used for samples and controls, used microplates) should be handled as potentially infective and disposed according to national directives and laws concerning laboratory wastes.

## 7. SPECIMEN: PREPARATION AND RECOMMENDATIONS

1. Blood is drawn aseptically by venepuncture and plasma or serum is prepared using standard techniques of preparation of samples for clinical laboratory analysis. No influence has been observed in the preparation of the sample with citrate, EDTA and heparin.
2. Samples have to be clearly identified with codes or names in order to avoid misinterpretation of results. Bar code labeling and electronic reading is strongly recommended.
3. Haemolysed ("red") and visibly hyperlipemic ("milky") samples have to be discarded as they could generate false results. Samples containing residues of fibrin or heavy particles or microbial filaments and bodies should be discarded as they could give rise to false results.
4. Sera and plasma can be stored at +2°..8°C for up to five days after collection. For longer storage periods, samples can be stored frozen at –20°C for several months. Any frozen samples should not be frozen/thawed more than once as this may generate particles that could affect the test result.
5. If particles are present, centrifuge at 2.000 rpm for 20 min or filter using 0.2-0.8µ filters to clean up the sample for testing.

## 8. PREPARATION OF COMPONENTS AND WARNINGS

A study conducted on an opened kit has not pointed out any relevant loss of activity up to 6 re-uses of the device and up to 3 months.

### Microplate:

Allow the microplate to reach room temperature (about 1 hr) before opening the container. Check that the desiccant has not turned dark green, indicating a defect in storing.

In this case, call DIAsourceImmunoAssays's customer service.

Unused strips have to be placed back into the aluminum pouch, with the desiccant supplied, firmly zipped and stored at +2°..8°C.

After first opening, remaining strips are stable until the humidity indicator inside the desiccant bag turns from yellow to green.

### Calibration Curve

Ready to use component. Mix carefully on vortex before use.

### Control Serum

Add the volume of ELISA grade water, reported on the label, to the lyophilised powder; let fully dissolve and then gently mix on vortex.

**Note:** *The control after dissolution is not stable. Store frozen in aliquots at –20°C.*

### Wash buffer concentrate:

The whole content of the concentrated solution has to be diluted 20x with bidistilled water and mixed gently end-over-end before use. During preparation avoid foaming as the presence of bubbles could impact on the efficiency of the washing cycles.

**Note:** *Once diluted, the wash solution is stable for 1 week at +2..8° C.*

### Enzyme conjugate:

Ready to use. Mix well on vortex before use.

Be careful not to contaminate the liquid with oxidizing chemicals, air-driven dust or microbes.

If this component has to be transferred use only plastic, possibly sterile disposable containers.

### Chromogen/Substrate:

Ready to use. Mix well on vortex before use.

Be careful not to contaminate the liquid with oxidizing chemicals, air-driven dust or microbes.

Do not expose to strong illumination, oxidizing agents and metallic surfaces.

If this component has to be transferred use only plastic, possible sterile disposable container

### Sample Diluent

Ready to use component. Mix carefully on vortex before use.

### Sulphuric Acid:

Ready to use. Mix well on vortex before use.

Legend: R 36/38 = Irritating to eyes and skin.

S 2/26/30 = In case of contact with eyes, rinse immediately with plenty of water and seek medical advice.

## 9. INSTRUMENTS AND TOOLS USED IN COMBINATION WITH THE KIT

1. Micropipettes have to be calibrated to deliver the correct volume required by the assay and must be submitted to regular decontamination (household alcohol, 10% solution of bleach, hospital grade disinfectants) of those parts that could accidentally come in contact with the sample. They should also be regularly maintained in order to show a precision of 1% and a trueness of +/-2%. Decontamination of spills or residues of kit components should also be carried out regularly.
2. The ELISA incubator has to be set at +37°C (tolerance of +/-0.5°C) and regularly checked to ensure the correct temperature is maintained. Both dry incubators and water baths are suitable for the incubations, provided that the instrument is validated for the incubation of ELISA tests.
3. The ELISA washer is extremely important to the overall performances of the assay. The washer must be carefully validated and correctly optimised using the kit controls and reference panels, before using the kit for routine laboratory tests. Usually 4-5 washing cycles (aspiration + dispensation of 350µl/well of washing solution = 1 cycle) are sufficient to ensure that the assay performs as expected. A soaking time of 20-30 seconds between cycles is suggested. In order to set correctly their number, it is recommended to run an assay with the kit controls and well characterized negative and positive reference samples, and check to match the values reported below in the section "Internal Quality Control". Regular calibration of the volumes delivered by, and maintenance (decontamination and cleaning of needles) of the washer has to be carried out according to the instructions of the manufacturer.
4. Incubation times have a tolerance of ±5%.
5. The ELISA microplate reader has to be equipped with a reading filter of 450nm and with a second filter (620-630nm, strongly recommended) for blanking purposes. Its standard performances should be (a) bandwidth ≤ 10 nm; (b) absorbance range from 0 to ≥ 2.0; (c) linearity to ≥ 2.0; repeatability ≥ 1%. Blanking is carried out on the well identified in the section "Assay Procedure". The optical system of the reader has to be calibrated regularly to ensure that the correct optical density is measured. It should be regularly maintained according to the manufacturer 's instructions.

- When using an ELISA automated work station, all critical steps (dispensation, incubation, washing, reading, data handling) have to be carefully set, calibrated, controlled and regularly serviced in order to match the values reported in the section "Internal Quality Control". The assay protocol has to be installed in the operating system of the unit and validated as for the washer and the reader. In addition, the liquid handling part of the station (dispensation and washing) has to be validated and correctly set. Particular attention must be paid to avoid carry over by the needles used for dispensing and for washing. This must be studied and controlled to minimize the possibility of contamination of adjacent wells. The use of ELISA automated work stations is recommended when the number of samples to be tested exceed 20-30 units per run.
- DIAsource ImmunoAssays's customer service offers support to the user in the setting and checking of instruments used in combination with the kit, in order to assure compliance with the requirements described. Support is also provided for the installation of new instruments to be used with the kit.

#### 10. PRE ASSAY CONTROLS AND OPERATIONS

- Check the expiration date of the kit printed on the external label (primary container). Do not use if expired.
- Check that the liquid components are not contaminated by visible particles or aggregates.
- Check that the Chromogen (TMB) is colourless or pale blue by aspirating a small volume of it with a sterile plastic pipette.
- Check that no breakage occurred in transportation and no spillage of liquid is present inside the box (primary container). Check that the aluminium pouch, containing the microplate, is not punctured or damaged.
- Dissolve the content of the lyophilised Control Serum as reported in the proper section.
- Dilute all the content of the 20x concentrated Wash Solution as described above.
- Allow all the other components to reach room temperature (about 1 hr) and then mix gently on vortex all liquid reagents.
- Set the ELISA incubator at +37°C and prepare the ELISA washer by priming with the diluted washing solution, according to the manufacturers instructions. Set the right number of washing cycles as found in the validation of the instrument for its use with the kit.
- Check that the ELISA reader is turned on or ensure it will be turned on at least 20 minutes before reading.
- If using an automated work station, turn on, check settings and be sure to use the right assay protocol.
- Check that the micropipettes are set to the required volume.
- Check that all the other equipment is available and ready to use.
- In case of problems, do not proceed further with the test and advise the supervisor.

#### 11. ASSAY PROCEDURE

The assay has to be carried out according to what reported below, taking care to maintain the same incubation time for all the samples in testing. The kit may be used for quantitative and qualitative determinations as well.

##### 11.1. QUANTITATIVE DETERMINATION:

###### Automated assay:

In case the test is carried out automatically with an ELISA system, we suggest to make the instrument aspirate 1000 µl Sample Diluent and then 10 µl sample (1:101 dilution factor). The whole content is then dispensed into a properly defined dilution tube. Before the next sample is aspirated, needles have to be duly washed to avoid any cross-contamination among samples. When all the samples have been diluted make the instrument dispense 100 µl samples into the proper wells of the microplate.

This procedure may be carried out also in two steps of dilutions of 1:10 each (90 µl Sample Diluent + 10 µl sample) into a second dilution platform. Make then the instrument aspirate first 100 µl Sample Diluent, then 10 µl liquid from the first dilution in the platform and finally dispense the whole content in the proper well of the assay microplate.

Do not dilute Calibrators and the dissolved Control Serum as they are ready to use.

Dispense 100 µl calibrators/control in the appropriate calibration/control wells.

For the next operations follow the operative instructions reported below for the Manual Assay.

It is strongly recommended to check that the time lap between the dispensation of the first and the last sample will be calculated by the instrument and taken into consideration by delaying the first washing operation accordingly.

###### Manual assay:

- Dilute samples 1:101 into a properly defined dilution tube (example: 1000 µl Sample Diluent + 10 µl sample). Do not dilute the Calibration Set as calibrators are ready to use. Mix carefully all the liquid components on vortex and then proceed as described below.
- Place the required number of microwells in the microwell holder. Leave the A1 and B1 empty for the operation of blanking.
- Dispense 100 µl of Calibrators and 100 µl Control Serum in duplicate. Then dispense 100 µl of diluted samples in each properly identified well.
- Incubate the microplate for **60 min at +37°C**.

**Important note:** Strips have to be sealed with the adhesive sealing foil, supplied, only when the test is carried out manually. Do not cover strips when using ELISA automatic instruments.

- Wash the microplate with an automatic washer as reported previously (section 9.3).
- Pipette 100 µl Enzyme Conjugate into each well, except A1+B1 blanking wells, and cover with the sealer. Check that this red coloured component has been dispensed in all the wells, except A1 and B1.

**Important note:** Be careful not to touch the plastic inner surface of the well with the tip filled with the Enzyme Conjugate. Contamination might occur.

- Incubate the microplate for **60 min at +37°C**.
- Wash microwells as in step 5.
- Pipette 100 µl Chromogen/Substrate mixture into each well, the blank wells A1 and B1 included. Then incubate the microplate at **room temperature (18-24°C) for 20 minutes**.

**Important note:** Do not expose to strong direct illumination. High background might be generated.

10. Pipette 100 µl Sulphuric Acid to stop the enzymatic reaction into all the wells using the same pipetting sequence as in step 9. Addition of acid will turn the positive calibrators, the control serum and the positive samples from blue to yellow.
11. Measure the colour intensity of the solution in each well, as described in section 9.5, at 450nm filter (reading) and at 620-630nm (background subtraction, strongly recommended), blanking the instrument on A1 or B1 or both.

## 11.2. QUALITATIVE DETERMINATION

If only a qualitative determination is required, proceed as described below:

### Automated assay:

Proceed as described in section 11.1.

### Manual assay:

1. Dilute samples 1:101 into a properly defined dilution tube (example: 1000 µl Sample Diluent + 10 µl sample). Do not dilute the Calibration Set as calibrators are ready to use. Mix carefully all the liquid components on vortex and then proceed as described below.
2. Place the required number of Microwells in the microwell holder. Leave A1 well empty for the operation of blanking.
3. Dispense 100 µl of Calibrator 0 arbU/ml and Calibrator 5 arbU/ml in duplicate and Calibrator 100 arbU/ml in single. Then dispense 100 µl of diluted samples in each properly identified well.
4. Incubate the microplate for 60 min at +37°C

**Important note:** Strips have to be sealed with the adhesive sealing foil, supplied, only when the test is carried out manually. Do not cover strips when using ELISA automatic instruments.

5. Wash the microplate with an automatic washer as reported previously (section 9.3).
6. Pipette 100 µl Enzyme Conjugate into each well, except the A1 well, and cover with the sealer. Check that this red coloured component has been dispensed in all the wells, except A1.

**Important note:** Be careful not to touch the plastic inner surface of the well with the tip filled with the Enzyme Conjugate. Contamination might occur.

7. Incubate the microplate for **60 min at +37°C**.
8. Wash microwells as in step 5.
9. Pipette 100 µl Chromogen/Substrate mixture into each well, the blank well included. Then incubate the microplate at **room temperature (18-24°C) for 20 minutes**.

**Important note:** Do not expose to strong direct illumination. High background might be generated.

10. Pipette 100 µl Sulphuric Acid into all the wells using the same pipetting sequence as in step 9. Addition of acid will turn the positive calibrators, the control serum and the positive samples from blue to yellow .
11. Measure the colour intensity of the solution in each well, as described in section 9.5, at 450nm filter (reading) and at 620-630nm (background subtraction, strongly recommended), blanking the instrument on A1.

### General Important notes:

1. If the second filter is not available ensure that no finger prints are present on the bottom of the microwell before reading at 450nm. Finger prints could generate false positive results on reading.
2. Reading has to be carried out just after the addition of the Stop Solution and anyway not any longer than 20 minutes after its addition. Some self oxidation of the chromogen can occur leading to high background.

## 12. ASSAY SCHEME

Method	Operations
Calibrators & Control	100 µl
Samples diluted 1:101	100 µl
1 <sup>st</sup> incubation	60 min
Temperature	+37°C
Wash step	4-5 cycles
Enzyme conjugate	100 µl
2 <sup>nd</sup> incubation	60 min
Temperature	+37°C
Wash step	4-5 cycles
TMB/H2O2	100 µl
3 <sup>rd</sup> incubation	20 min
Temperature	r.t.
Sulphuric Acid	100 µl
Reading OD	450nm

An example of dispensation scheme for Quantitative Analysis is reported below:

### Microplate

	1	2	3	4	5	6	7	8	9	10	11	12
A	BLK	CAL4	S 1									
B	BLK	CAL4	S 2									
C	CAL1	CAL5	S 3									
D	CAL1	CAL5	S 4									
E	CAL2	CAL6	S 5									
F	CAL2	CAL6	S 6									
G	CAL3	CS	S 7									
H	CAL3	CS	S 8									

Legend: BLK = Blank                      CAL = Calibrator  
 CS = Control Serum                      S = Sample

An example of dispensation scheme in Qualitative Assays is reported below:

### Microplate

	1	2	3	4	5	6	7	8	9	10	11	12
A	BLK	S 3	S 11									
B	CAL1	S 4	S 12									
C	CAL1	S 5	S 13									
D	CAL2	S 6	S 14									
E	CAL2	S 7	S 15									
F	CAL6	S 8	S 16									
G	S1	S 9	S 17									
H	S 2	S 10	S 18									

Legend: BLK = Blank                      CAL = Calibrators  
 S = Sample

### 13. INTERNAL QUALITY CONTROL

A validation check is carried out on the controls any time the kit is used in order to verify whether the performances of the assay are as qualified.

Control that the following data are matched:

Check	Requirements
Blank well	< 0.050 OD450nm value
CAL 1 0 arbU/ml	< 0.150 mean OD450nm value after blanking coefficient of variation < 30%
CAL 2 5 arbU/ml	OD450nm > OD450nm CAL1 + 0.100
CAL 6 100 arbU/ml	OD450nm > 1.000
Control Serum	20 arbU/ml +/-20%



If the results of the test match the requirements stated above, proceed to the next section.

If they do not, do not proceed any further and operate as follows:

Problem	Check
<b>Blank well</b> > 0.050 OD450nm	1. that the Chromogen/Sustrate solution has not got contaminated during the assay
<b>CAL 1</b> <b>0 arbU/ml</b> > 0.150 OD450nm after blanking  coefficient of variation > 30%	1. that the washing procedure and the washer settings are as validated in the pre-qualification study; 2. that the proper washing solution has been used and the washer has been primed with it before use; 3. that no mistake has been done in the assay procedure (dispensation of a positive calibrator instead of the negative one); 4. that no contamination of the negative calibrator or of their wells has occurred due spills of positive samples or the enzyme conjugate; 5. that micropipettes haven't got contaminated with positive samples or with the enzyme conjugate 6. that the washer needles are not blocked or partially obstructed.
<b>CAL 2</b> <b>5 arbU/ml</b>  OD450nm < OD450nm CAL1 + 0.100	1. that the procedure has been correctly executed; 2. that no mistake has been done in its distribution (ex.: dispensation of a wrong calibrator instead); 3. that the washing procedure and the washer settings are as validated in the pre-qualification study; 4. that no external contamination of the calibrator has occurred.
<b>CAL 6</b> <b>100 arbU/ml</b>  < 1.000 OD450nm	1. that the procedure has been correctly executed; 2. that no mistake has been done in its distribution (dispensation of a wrong calibrator instead) ; 3. that the washing procedure and the washer settings are as validated in the pre-qualification study; 4. that no external contamination of the positive control has occurred.
<b>Control Serum</b>  Different from expected value	1. that the procedure has been correctly executed; 2. that no mistake has been done in its distribution (dispensation of a wrong calibrator instead); 3. that the washing procedure and the washer settings are as validated in the pre-qualification study; 4. that no external contamination of the positive control has occurred.

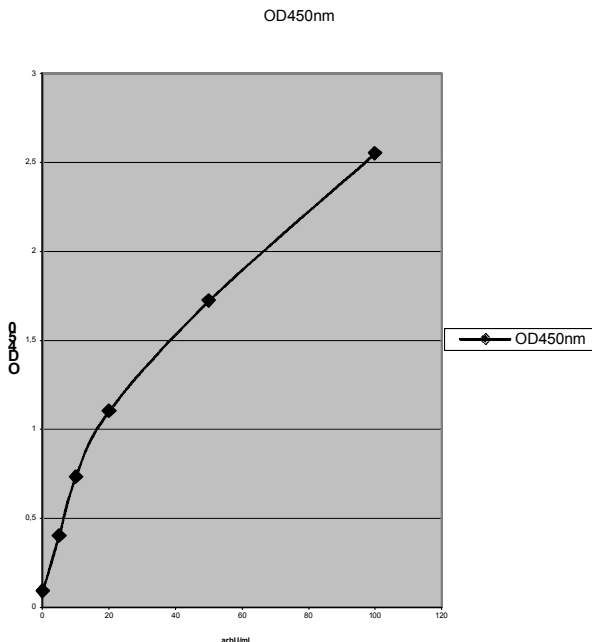
Should one of these problems have happened, after checking, report to the supervisor for further actions.

## 14. RESULTS

### 14.1 Quantitative method

If the test turns out to be valid, use for the quantitative method an approved curve fitting program to draw the calibration curve from the values obtained by reading at 450nm (4-parameters interpolation is suggested).  
Then on the calibration curve calculate the concentration of anti Herpes Simplex Virus type 1 IgG antibody in samples.

An example of Calibration curve is reported here:



**Important Note:**

Do not use the calibration curve above to make calculations.

**14.2 Qualitative method**

In the qualitative method, calculate the mean OD450nm values for the Calibrators 0 and 5 arbU/ml and then check that the assay is valid.

Example of calculation:

The following data must not be used instead of real figures obtained by the user.

Calibrator 0 arbU/ml: 0.020 – 0.024 OD450nm  
 Mean Value: 0.022 OD450nm  
 Lower than 0.150 – Accepted

Calibrator 5 arbU/ml: 0.350 – 0.370 OD450nm  
 Mean Value: 0.360 OD450nm  
 Higher than Cal 0 + 0.100 – Accepted

Calibrator 100 arbU/ml: 2.245 OD450nm  
 Higher than 1.000 – Accepted

**15. INTERPRETATION OF RESULTS**

Samples with a concentration lower than 5 arbU/ml are considered negative for anti HSV1 IgG antibody.

Samples with a concentration higher than 5 arbU/ml are considered positive for anti HSV1 IgG antibody.

Particular attention in the interpretation of results has to be used in the follow-up of pregnancy for a primary infection of HSV due to the risk of neonatal malformations.

**Important notes:**

1. Interpretation of results should be done under the supervision of the laboratory supervisor to reduce the risk of judgment errors and misinterpretations.
2. When test results are transmitted from the laboratory to another facility, attention must be paid to avoid erroneous data transfer.
3. In the follow-up of pregnancy for HSV infection a positive result (presence of IgG antibody > 5 arbU/ml) should be confirmed to ruled out the risk of a false positive result and a false definition of protection.

**16. PERFORMANCES****1. Limit of detection**

The limit of detection of the assay has been calculated by means of an internal Gold Standard in absence of an international preparation to refer to.

The limit of detection has been calculated as mean OD450nm Calibrator 0 arbU/ml + 5 SD.

The table below reports the mean OD450nm values of this standard when diluted in negative plasma and then examined in the assay for three lots.

Mean OD450nm values (n = 2)

IgG arbU/ml	HSV1G.PU Lot # 0703	HSV1G.PU Lot # 1203	HSV1G.PU Lot # 0204/2
0	0.077	0.034	0.043
5	0.355	0.404	0.318
10	0.742	0.713	0.516
20	1.254	1.216	0.944
50	1.952	1.928	1.728
100	2.623	2.261	2.072

The assay shows a limit of detection far better than 5 arbU/ml.

In addition the preparation code Accurun n° 150, produced by Boston Biomedica Inc., BBI, USA, was tested in dilutions to determine the limit of its detection and provide a further value of analytical sensitivity.

**Mean OD450nm values (n = 2)**

Dilution	HSV1G.CE Lot # 1004	HSV1G.PU Lot # 1203	HSV1G.PU Lot # 0204/2
1 X	1.248	1.218	1.300
2 X	0.860	0.848	0.876
4 X	0.545	0.526	0.583
8 X	0.315	0.300	0.329
16 X	0.164	0.152	0.148
32 X	0.082	0.064	0.072
0 arbU/ml	0.057	0.050	0.047
5 arbU/ml	0.288	0.355	0.318

**2. Diagnostic sensitivity:**

The diagnostic sensitivity has been tested in a performance evaluation study on panels of samples classified positive by a kit US FDA approved. Positive samples from different stage of HSV infection were tested. The value, obtained from the analysis of more than 300 specimens, has been > 98%.

**3. Diagnostic specificity:**

The diagnostic specificity has been determined on panels of negative samples from not infected individuals, classified negative with a kit US FDA approved.

Both plasma, derived with different standard techniques of preparation (citrate, EDTA and heparin), and sera have been used to determine the value of specificity.

Frozen specimens have been tested, as well, to check for interferences due to collection and storage.

No interference was observed.

Potentially interfering samples derived from patients with different pathologies (mostly ANA, AMA and RF positive) and from pregnant women were tested.

No crossreaction was observed.

An overall value > 98% of specificity was found when examined on more than 100 specimens.

**4. Precision:**

It has been calculated on the Calibrator 5 arbU/ml, considered the cut-off of the assay, examined in 16 replicates in three separate runs for three lots.

Results are reported as follows:

**HSV1G.CE Lot # 1004**

Mean values	1st run	2nd run	3 <sup>rd</sup> run	Average value
OD 450nm	0.292	0.290	0.285	0.289
Std.Deviation	0.024	0.024	0.027	0.025
CV %	8.24	8.28	9.42	8.65

**HSV1G.PU: lot 1203**

Mean values	1st run	2nd run	3 <sup>rd</sup> run	Average value
OD 450nm	0.365	0.382	0.378	0.375
Std.Deviation	0.022	0.029	0.018	0.023
CV %	6.02	7.59	4.76	6.12

**HSV1G.PU: Lot 0204/2**

Mean values	1st run	2nd run	3 <sup>rd</sup> run	Average value
OD 450nm	0.322	0.298	0.304	0.308
Std.Deviation	0.018	0.019	0.016	0.018
CV %	5.59	6.38	5.26	5.74

The variability shown in the tables above did not result in sample misclassification.

### **17. LIMITATIONS OF THE PROCEDURE**

Bacterial contamination or heat inactivation of the specimen may affect the absorbance values of the samples with consequent alteration of the level of the analyte.

Frozen samples containing fibrin particles or aggregates after thawing may generate some false results.

This test is suitable only for testing single samples and not pooled ones.

Diagnosis of an infectious disease should not be established on the basis of a single test result. The patient's clinical history, symptomatology, as well as other diagnostic data should be considered.

### **REFERENCES**

1. Engvall E. and Perlmann P.. *J.Immunochemistry* 8: 871-874, 1971
2. Engvall E. and Perlmann P.. *J.Immunol.* 109: 129-135, 1971
3. Remington J.S. and Klein J.O.. (1996) In "Infectious diseases of fetus and newborn infant". Sanders, Philadelphia, London, Toronto.
4. Volk W.A. (1982) In "essential of Medical Microbiology". 2<sup>nd</sup> ed., pp 729, G.B. Lippincott Co. Philadelphia, New York, S.José, Toronto.
5. Leinikki P.O. et al.. *J.Clin.Microbiol.* 8:418, 1978
6. Piroid E. et al.. *Révue Méd.Vet.* 131:25, 1980.
7. Vaheri A. et al.. *J.Med.Virol.* 5: 171, 1980.
8. Vejtorp M. et al.. *Acta Path.Microbiol.Scand.* 88:349, 1980.
9. Voller A. et al.. *Brit.J.Exp.Pathol.* 56:338, 1975

Revision date : 2015-01-05

	<b>Used symbols</b>
	Consult instructions for use
	Storage temperature
	Use by
<b>LOT</b>	Batch code
<b>REF</b>	Catalogue number
<b>CONTROL</b>	Control
<b>I V D</b>	In vitro diagnostic medical device
	Manufacturer
	Contains sufficient for <n> tests
WASH SOLN CONC	Wash solution concentrated
CAL 0	Zero calibrator
CAL N	Calibrator #
CONTROL N	Control #
Ag 125I	Tracer
Ab 125I	Tracer
Ag 125I CONC	Tracer concentrated
Ab 125I CONC	Tracer concentrated
	Tubes
INC BUF	Incubation buffer
ACETONITRILE	Acetonitrile
SERUM	Serum
DIL SPE	Specimen diluent
DIL BUF	Dilution buffer
ANTISERUM	Antiserum
IMMUNOADSORBENT	Immunoabsorbent
DIL CAL	Calibrator diluent
REC SOLN	Reconstitution solution
PEG	Polyethylene glycol
EXTR SOLN	Extraction solution
ELU SOLN	Elution solution
GEL	Bond Elut Silica cartridges
PRE SOLN	Pre-treatment solution
NEUTR SOLN	Neutralization solution
TRACEUR BUF	Tracer buffer
<b>µT</b>	Microtiterplate
Ab HRP	HRP Conjugate
Ag HRP	HRP Conjugate
Ab HRP CONC	HRP Conjugate concentrate
Ag HRP CONC	HRP Conjugate concentrate
CONJ BUF	Conjugate buffer
CHROM TMB CONC	Chromogenic TMB concentrate
CHROM TMB	Chromogenic TMB solution
SUB BUF	Substrate buffer
STOP SOLN	Stop solution
INC SER	Incubation serum
BUF	Buffer
Ab AP	AP Conjugate
SUB PNPP	Substrate PNPP
BIOT CONJ CONC	Biotin conjugate concentrate
PREC AGENT	Precipitating Agent
AVID HRP CONC	Avidine HRP concentrate
ASS BUF	Assay buffer
Ab BIOT	Biotin conjugate
Ab	Specific Antibody
SAV HRP CONC	Streptavidin HRP concentrate
NSB	Non-specific binding
2nd Ab	2nd Antibody
ACID BUF	Acidification Buffer
DIST	Distributor
TRAY	Incubation trays
PMSF	PMSF solution
	Protect from light
STRIP	Dot Strip
SUB	Substrate
EXTR SOLN CONC	Extraction Buffer Concentrate
CART	Cartridge
SAV HRP	Streptavidin HRP
PIPETTE	Pipette
WASH SOLN	Wash buffer